

機械工程系 Department of Mechanical Engineering

先進機器感知與系統分析 Advanced Machine Perception and Systems Analysis

機器感知實驗室 Machine Perception Lab.



O: 綜科 323
#2033

L: 綜科 525-4
#2048

許志明 副教授
Assistant Prof. Chih-Ming Hsu

台灣大學電機系
National Taiwan University
Department of Electrical
Engineering

jmshiu@ntut.edu.tw

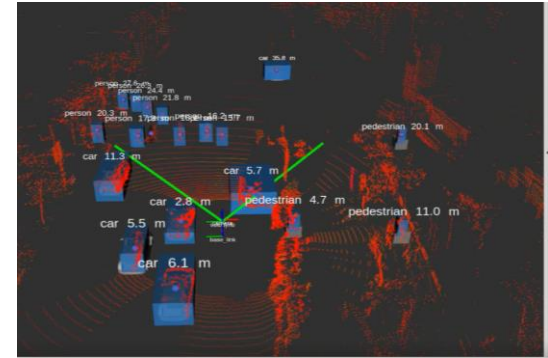
研究領域

智慧車與駕駛輔助系統、
自動駕駛系統、自主機器
人導航系統、光達與視覺
SLAM、智慧型運輸系統、
生理感測與訊號處理、電
腦視覺與影像處理



近期研究主題

- 自動駕駛多感器整合與驗證系統
- 自動泊車系統與驗證
- 前瞻駕駛道路環境偵測
- 多元資訊空間感知與識別
- 駕駛疲勞與注意力感知



自動駕駛之多感器整合與驗證系統
Multi-sensor Fusion and Verification

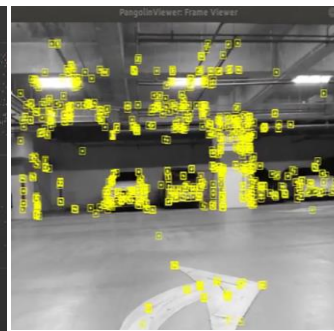
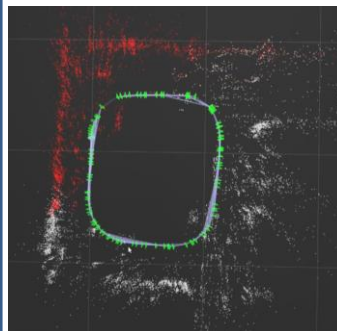
Research Area

Intelligent vehicle and driver
assistance systems, Intelligent
transportation systems,
Autonomous driving systems,
Driver monitoring systems

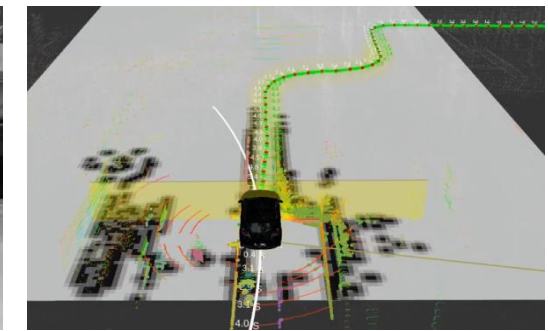


Recent Topics

Multi-sensor Fusion and Verification
Systems, Automated Valet Parking
system(AVP), Lidar SLAM and Visual
SLAM, Driver Monitoring Systems



自動泊車單眼視覺定位與建圖系統
Monocular Visual SLAM for AVP



自主機器人導航系統
Autonomous Navigation System

