

機電整合研究所  
Institute of Mechatronic  
Engineering

虛擬工程  
Virtual and Simulation  
Engineering



O: 綜科 112-A  
#2015

L: 綜科 112-6  
#2039

蔡定江 副教授

Associate Prof. Ting-Chiang Tsai

中央大學  
Central University

[tct sai@ntut.edu.tw](mailto:tct sai@ntut.edu.tw)

■ 研究領域

結構振動、機械設計、電  
腦輔助工程分析

■ 近期研究主題

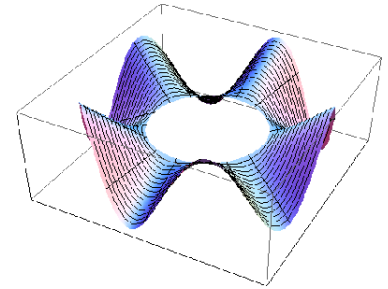
- 結構減振
- 軸孔縮配設計
- 鎖緊螺牙負載均化研究
- 線性滑軌之額定負載與壽命測定
- 高效率風扇葉片分析與設計
- 特殊結構電腦輔助分析
- 創意機構生活化應用

■ Research Area

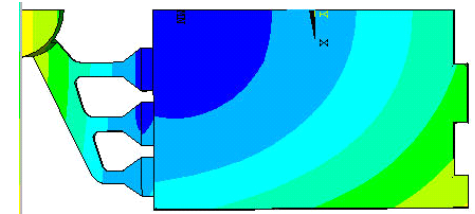
Structural vibration, mechanical design, computer aided engineering analysis

■ Recent Topics

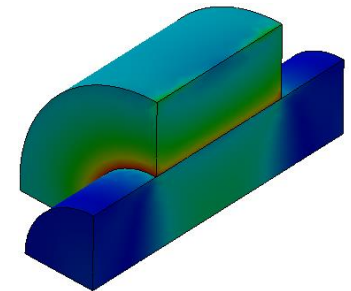
- Vibration reduction of structure
- Design of press and shrink fits
- Equalizing thread stresses of threaded fastener
- Tests of load rating and life of linear guide way
- Design of high efficient fan blade
- CAE of special structure
- Creative mechanism for life application



碟片振動模態



3C 壓鑄薄件翹曲改善  
之熱傳分析



軸孔縮配應力分布