



O: 綜科 616-2
#2073

L: 綜科 B03-4
#2029

張敬源 副教授
Associate Prof. Ching-Yuan Chang

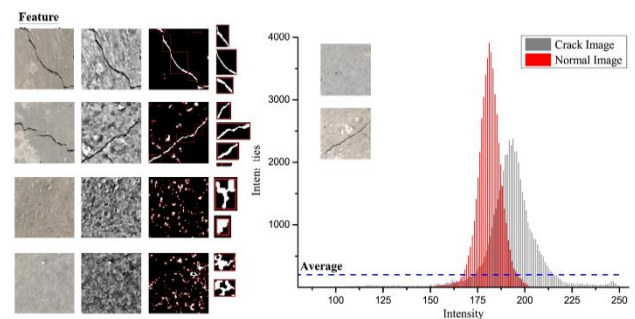
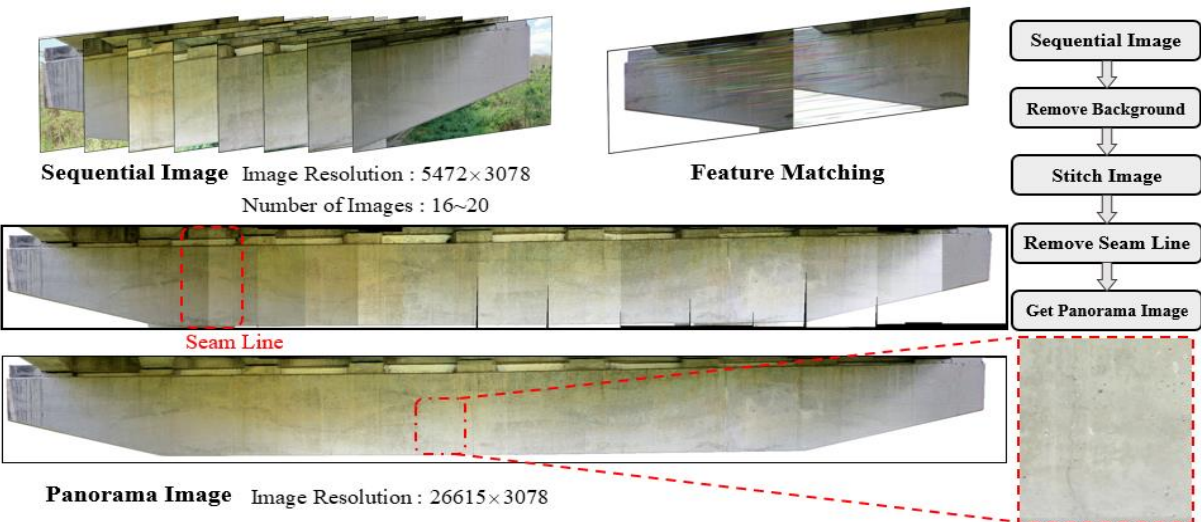
國立臺灣大學
National Taiwan University

chang@ntut.edu.tw

<http://www.taipeitech.info>

橋樑微裂縫自動偵測系統 (空拍載具、機械視覺、固體力學)

Automatic detection system for bridge micro-cracks (airborne vehicle, machine vision, solid mechanics)



Confusion Matrix

Accuracy:82.73% TPR:74.81% FPR:9.3%

True Class	P	TP 823	FN 277
	N	FP 103	TN 997
		P	N
		Predicted Class	

Kernel Function Efficiency Comparison

	MATLAB Linear Kernel	MATLAB Gaussian Kernel	MATLAB Quadratic Kernel	LAB Gaussian Kernel
CR	85.13 %	85.72 %	85.31 %	82.73 %
TPR	91.51 %	92.9 %	91.11 %	74.81 %
FPR	19.5 %	19.4 %	19 %	9.3 %