

能源與冷凍空調工程系
Department of Energy
and Refrigerating Air-
conditioning Engineering

先進空調與熱交換設備
Advanced Air-
conditioning and Heat
Exchange Equipment

熱交換器實驗室
Heat Exchanger Lab.



O: 綜科 606-2
#3522

L: 綜科 611-4
#3519

簡良翰教授
Prof. Liang-Han Chien

賓州州立大學
Pennsylvania State University

lhchien@ntut.edu.tw

<http://wwar.web.ntut.edu.tw/files/11-1039-1618-1.php>

■ 研究領域

能源科技、熱交換器設計、冷凍空調節能技術、電子設備散熱技術、雙相熱對流分析

■ 近期研究主題

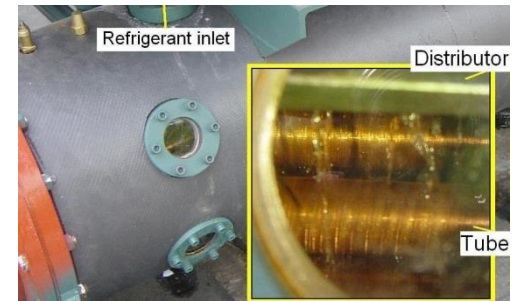
- 高能效滴淋式冰水機
- 非導電液晶片冷卻技術
- 噴淋微流道雙相熱對流
- 高效率沸騰表面
- 蒸發冷凝式冰水機
- 防颱阻雨百葉模擬設計
- 含油冷媒熱傳性能研究

■ Research Area

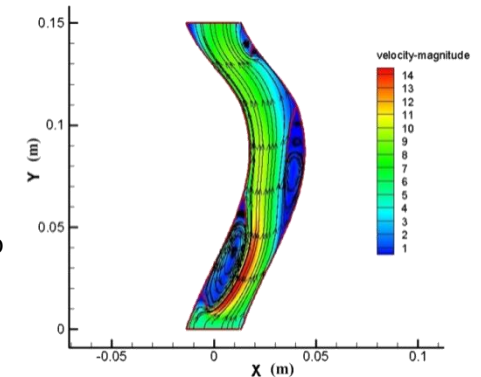
Energy technology, heat exchanger design, Energy saving technology for air-conditioning, cooling technology for electronic devices, analysis of two phase convection

■ Recent Topics

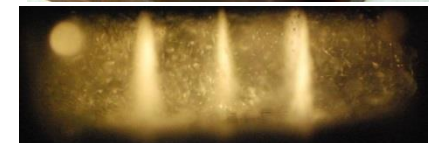
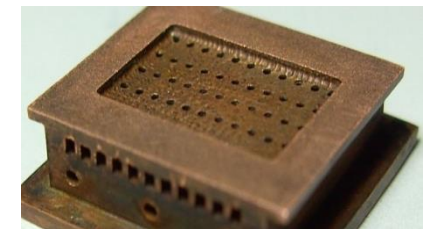
- High efficiency falling film type water chiller
- Electronic cooling technology using di-electric fluid
- Impinging two phase jets in micro channels
- Enhanced boiling surfaces
- Evaporative cooled water chiller
- Simulation and design of storm resistant louvers
- Heat transfer study of oil/refrigerant mixture



高能效滴淋式冰水機開發
Developing high performance
falling film type Chiller



防颱阻雨百葉氣流模擬
Storm resistant louver simulation



噴淋微流道可視化
Impinging jet visualization