

製造科技研究所
Institute of Manufacture
Technology

先進檢測與嵌入式控制分析
Advanced Inspection and
Embedded Control Analysis

智動化檢測與嵌入式控制實驗室
Intelligent Automated Inspection
and Embedded Control Lab.



O: 綜科 220
#2020

L: 綜科 712-2
#3706

何昭慶 教授
Prof. Chao-Ching Ho

國立台灣科技大學
Nat'l Taiwan University of
Science and Technology

HoChao@ntut.edu.tw
[https://myweb.ntut.edu.tw/~ho
chao/](https://myweb.ntut.edu.tw/~ho_chao/)

研究領域

機器視覺、精密量測、線上檢測、工業深度學習、嵌入式系統開發、智動化製程診斷與檢測技術

近期研究主題

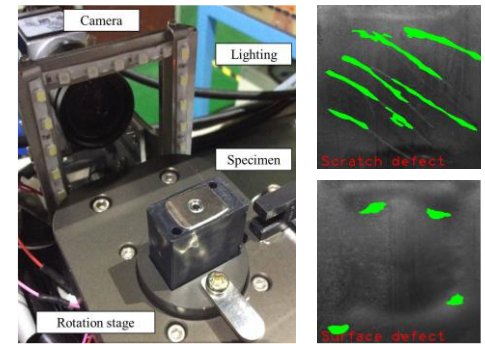
- 基於機器視覺及CAD模型之先進噴印線上對準系統
- 快速辨識布料對花演算技術方法
- 藍寶石微加工與臨場檢測技術之研究
- 人工智慧(AI)深度學習之產品外觀瑕疵檢測系統

Research Area

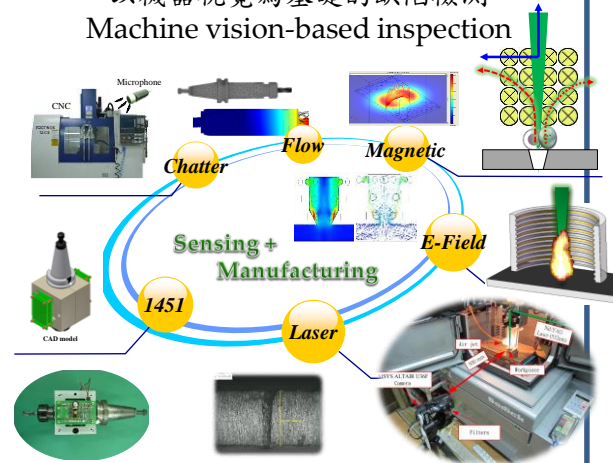
Machine vision, measurement, on-line inspection, industrial AI, prognostic system

Recent Topics

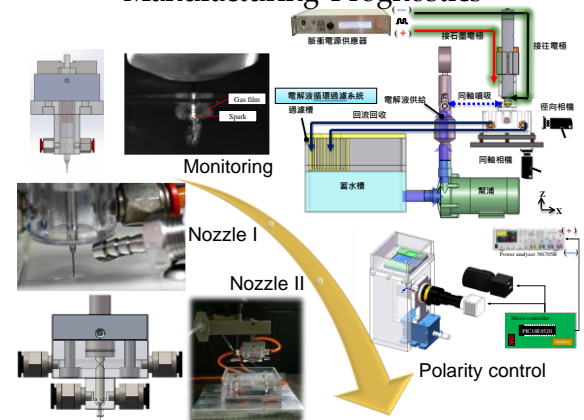
- Machine vision and CAD model based online registration for advanced inkjet system
- Deep Residual Network-based Automated Fabric Inspection
- Industrial AI based Scratch Defect Detection System
- A study of sapphire micro-machining and in-situ inspection



以機器視覺為基礎的缺陷檢測
Machine vision-based inspection



Manufacturing Prognostics



藍寶石微加工與臨場檢測技術之研究
Sapphire micro-machining and in-situ inspection