

自動化科技研究所 Graduate Institute of Automation Technology

智慧型系統設計 Intelligent System Design

智慧型系統實驗室 Intelligent System Lab.



O: 綜科 605-2
#4323

L: 綜科 801B-2
#4371

陳文輝 教授
Prof. Wen-Hui Chen

國立臺灣大學
National Taiwan University

whchen@ntut.edu.tw

<https://my591234.wixsite.com/islab>

- 研究領域
 - 人工智慧
 - 機器學習
 - 資料探勘
 - 深度學習

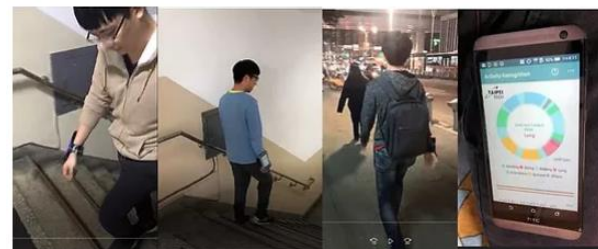
■ 近期研究主題

- 智慧生活科技
- 自動駕駛
- 邊緣計算

Real-time Deep Learning based Object Detection Systems



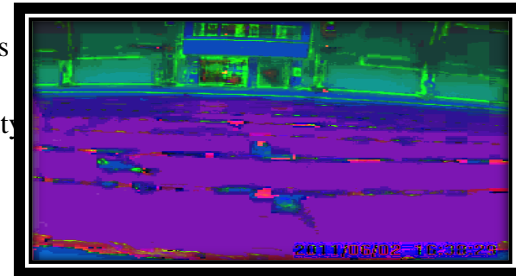
Sensor-based Activity Recognition on Mobile Devices



- Research Area
 - Artificial Intelligence
 - Pattern Recognition
 - Data Mining
 - Intelligent Agents

■ Recent Topics

- Real-time Object Detection for Autonomous Driving
- Edge Computing for Autonomous Vehicles
- Deep Learning for Human Activity Recognition



以視覺為基礎之姿態辨識系統
Vision-based Gesture Recognition Systems