

車輛工程系 Department of Vehicle Engineering

機電整合、車輛模擬、節能 Mechatronics, Vehicle Simulation, Energy-saving

複合動力控制與節能應用實驗室 Hybrid Electric Control and Energy-saving Application Lab.



O: 綜科 526-14
#3614

L: 綜科 B10-32

吳建勳 副教授
Associate Prof. Chien-Hsun Wu

國立清華大學
National Tsing Hua University

chwu@ntut.edu.tw

■ 研究領域

- 最佳控制
- 車輛模擬
- 線控系統
- 能源管理系統
- 硬體嵌入式

■ 近期研究主題

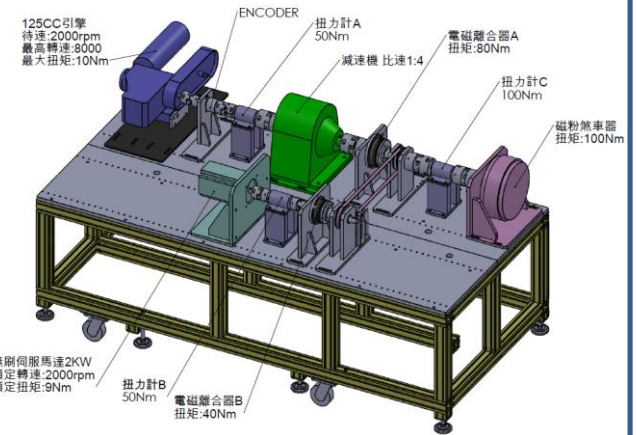
- 自駕車輛之系統開發
- 線控系統之遙控與機電整合
- 混合動力車輛之能量管理與硬體嵌入式
- 機車車載油氣回收系統
- 混合動力機車之最佳能源管理

■ Research Area

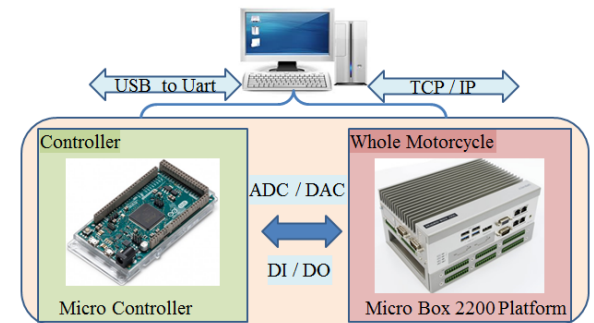
- Optimal Control
- Vehicle Simulation
- Drive-by-wire
- Energy Management System
- Hardware-in-the-loop

■ Recent Topics

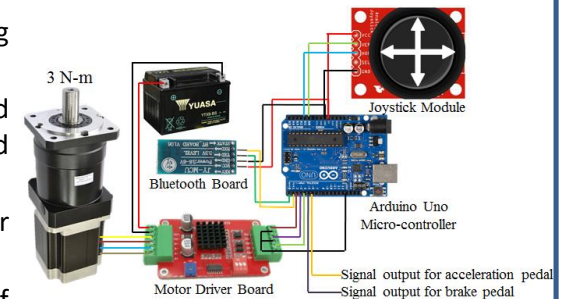
- System Development of the Self-driving Vehicle
- Mechatronics and Remote Driving Control of the Drive-by-wire
- Energy Management and Hardware-in-the-loop for Hybrid Vehicle
- Onboard Refueling Vapor Recovery System of the Scooter
- Optimal Energy Management of the Hybrid Scooter



混合動力測試平台
Hybrid Power Test Platform



硬體嵌入式系統
Hardware-in-the-loop System



線控轉向系統之機電整合設計
Mechatronics Design of the Steer-by-wire System