

能源與冷凍空調工程系
Department of Energy and
Refrigerating Air-
conditioning Engineering

能源與環境品質研究
Energy and Environment
Research

6E 實驗室
6E Research Laboratory



O: 綜科 515
#3508

蔡尤溪 教授
Prof. Yew Khoy Chuah

加州大學柏克萊分校
University of California
at Berkeley

yhtsai@ntut.edu.tw
0922-267-390

<http://www.ntut.edu.tw/~s2458008/>

研究領域

冷凍空調、建築節能、環境品質、
防火排煙、熱流工程、能源科技

近期研究主題

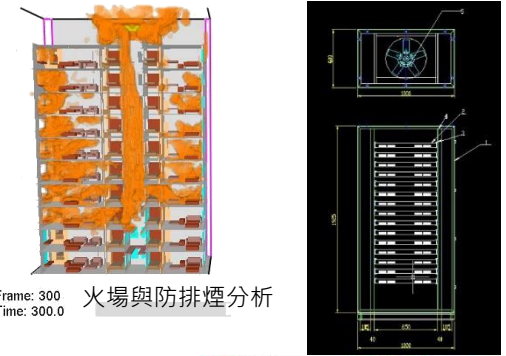
- 建築動態能源電腦模擬
- 遠端建築能源管理(BEMS)
- 網路機房(IDC)空調節能
- 智慧建築與綠建築空調節能
- 高效率空調設備
- 整合熱回收之單元式空調機
- 空調氣流與熱舒適設計模擬
- 科技製程潔淨室改善分析
- 隧道與車站排煙及防火避難研究
- 特高壓地下洞道電纜散熱

Research Area

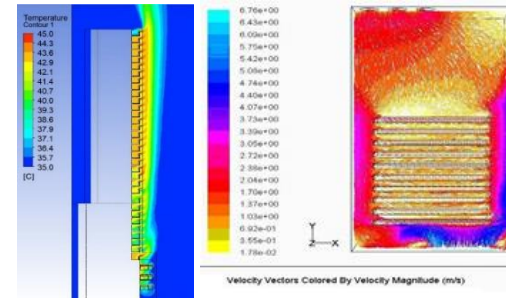
Air-conditioning and Refrigeration,
Building Energy Saving, Environment
Quality, Fire and Smoke Control,
Thermal Fluid Engineering, Energy
Technology

Recent Topics

- Building energy dynamic modeling
- Building energy management system
- Internet data center energy saving
- Intelligent and green building
- High efficient equipment development
- Integrated heat recovery dedicated outdoor air system
- Thermal comfort and air flow
- High tech clean room design
- Tunnel ventilation and smoke control
- Building and station smoke control
- Underground power cable heat dissipation design

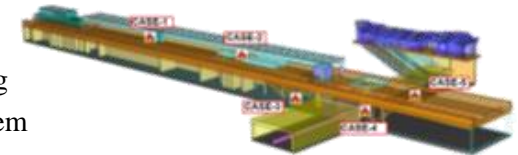


Frame: 300
Time: 300.0
火場與防排煙分析



室外機熱氣流模擬

節能IDC機櫃



國外捷運站體
及捷運車輛火災排煙安全設計



BACnet網路標準之空調能源管理系統