

機電整合研究所
Institute of Mechatronic
Engineering

CNC工具機與機器人
CNC Machine Tools
and Robotics



O: 綜科 714-5
#2025
L: 綜科 B13-1
#2019

葉賜旭 副教授
Associate Professor
Dr. Syh-Shiuh Yeh

國立交通大學
電機與控制工程研究所
National Chiao Tung University
Institute of
Electrical and Control Engineering

ssyeh@ntut.edu.tw

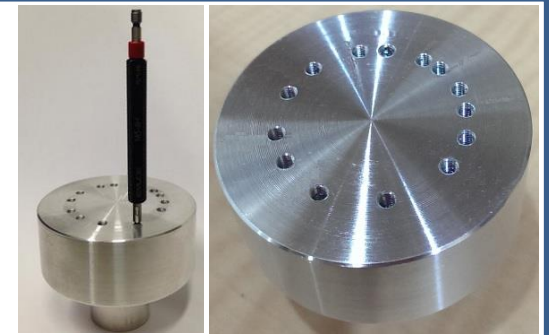
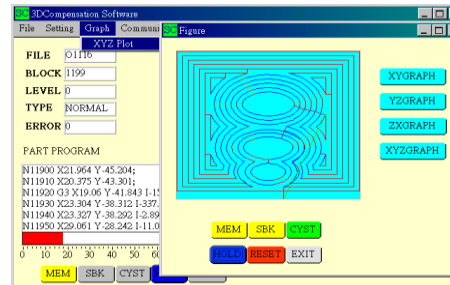
<https://orcid.org/0000-0002-2446-2758>

- 研究領域
 - CNC工具機運動控制
 - 機器人學與機械手臂控制
 - 動態系統與控制
- 近期研究主題
 - 工具機切削過程之在線進給率調整控制最佳化設計
 - 控制器參數對工具機機台運動性能的影響評估與優化
 - 切削負載回饋適應性運動控制命令調變技術
 - 考量人類行為特性的機器人互動技術研究

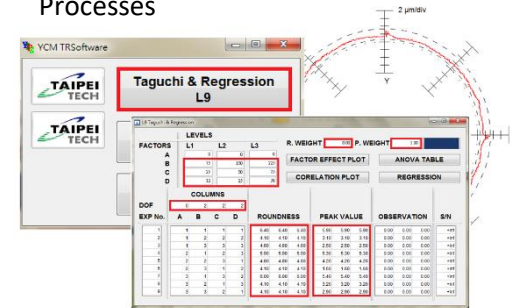
- Research Area
 - CNC Machine Tool Motion Control
 - Robotics and Manipulator Control
 - Dynamic Systems and Control

- Recent Topics
 - Design Optimization of an Online Feedrate Adjusting Control for Cutting Processes Performed Using Machine Tools
 - Evaluation and Optimization of Control Parameters for Improving Motion Performances of CNC Machine Tools
 - An Adaptive Motion-Control-Command Modulation Technique Using Cutting Load Feedback

Software
Architecture
for Motion
Control and
Simulation of
CNC Machine
Tools



Application of Fuzzy Control to Spindle Speed Adjustment during Rigid Tapping Processes



Software Design for Evaluation and Optimization of CNC Machine Tool Control Parameters



System and Control Design for Physical Human-Robot Interaction (pHRI)